

Field Band
2019

Central Square
“Redhawk Regiment”

Marching Band

Liverpool Competition

“Silks and Sounds of Autumn”

Saturday, October 5th, 2019

Liverpool High School Stadium

5:30 p.m. – Show Begins

Gates open at 4:30 p.m.

\$9.00 at the gate

\$7.00 Pre-sale

7:01 p.m. – Central Square Performs!!

No motorized vehicles are allowed on Liverpool’s field.

Central Square "Redhawk Regiment"
2019
Itinerary for Saturday, October 5th, 2019

"Silks and Sounds of Autumn"
Liverpool High School Stadium

Equipment Vehicles:

8:00 a.m. – B&G Truck and two Equipment Trucks arrive at the high school.

Rehearsal information for the band members and the staff:

9:45 a.m. – Load and move Pit Percussion down to the stadium area.

10:00 – 10:15 a.m.- All Field Band Members arrive for rehearsal. Be sure to eat and drink before you arrive to practice. Be sure to have with you black socks and your clean and shiny" marching shoes. Be sure to wear your Redhawk Regiment Excellence shirts for rehearsal. Turn in notes if you are leaving with your parents after awards.

Before Rehearsal - Drum Line cases and sousaphone cases and battery percussion cases should all be placed outside to be loaded onto equipment vehicles. Those instruments will be loaded at the stadium following rehearsal. All others will go on or under the buses.

10:30 a.m. – 2:15 p.m. – **Field Band Rehearsal**

1:45 p.m. - Equipment trucks will be moved to the Stadium Field to load after rehearsal.

2:15 p.m. – Rehearsal and run-through ends.

Load equipment Vehicles, Eat lunch by Music Booster Parents and change.

3:15 p.m. – 3 passenger buses arrive to load. All field band members dress in bibs and uniform shirts. Uniform bags with change of clothes, uniform jackets and shakos go on the buses along with instruments with the exception of Battery and Sousaphones.

3:45 p.m. – Equipment Trucks and Equipment Bus will leave for Liverpool and will unload upon arrival.

4:10 p.m. – Passenger buses leave for Liverpool. Flutes, Clarinets, Saxophones, Trumpets – on buses.

Trombones, Mellophones and Baritone put instruments under the buses.

Preparation for Performance: (Members, Parents and Staff)

4:10 p.m. – Equipment Vehicles arrive in Liverpool/unload equip/load pit carts.

4:30 p.m. – All passenger buses arrive at Liverpool. Get hands stamped, instruments and equipment, use restrooms before stretch and basics.

4:45 p.m. – Stretch and Basics warm-up, jackets on, gloves taped, etc.
Our scheduled warm-up area is Area A that is in front of Wetzel Elem. School, but we are only scheduled there from 5:45 – 6:25. So we may need to find some space past the Wetzel Elem. School to do our normal routine. (See map)
5:45 p.m. – Individual Warm-up and Tuning
6:05 p.m. – Ensemble
6:25 p.m. - Circle and sing, load Pit Carts, set the entrance block.
6:35 p.m. – Move to the stadium field for staging
6:45 p.m. – Ready at the Gate and Staging Area
7:01 p.m. – Redhawk Regiment Performs

Following Performance:

Change into street clothes and return to the stadium for awards. Students return to the stadium to watch the other bands and to be together for Retreat and Awards.
Hang uniform neatly in bag.

Awards will be at approximately 8:45 p.m. Drum Majors will line up at the Scoreboard Field Gate at 8:30 p.m. Along with the Drum Major and Jennifer Gasser, the following senior field band members will be doing Retreat this weekend:
Emma LaCelle and Courtney Nowack

9:15 p.m. - Students board buses to return to Central Square after awards to return to PVM.
Buses return to Central Square:
9:40 p.m. - unload instruments and equipment.
10:00 – 10:15 p.m. - **Student pick-up time at the high school.**

Additional Show Information:

- * We have presale tickets for \$7.00 available through Music Boosters or Ron Haldeman.
- * If your parents are picking you up at Liverpool after the show, I must have a note by Saturday. Students returning with a parent must make arrangements to be sure that their instrument is taken care of when the equipment bus and truck return. Parents must pick up their child in the presence of a chaperone at the buses following Central Square's performance.
- * Directions: The easiest way to Liverpool is:
County Route 12 out of Central Square to route 10 West. Route 10 to route 31 West to Wetzel Road. Turn right off of Wetzel Road to the high school.
- * If you have any other questions please contact me at your convenience.

Thank you,
Ron Haldeman, Director 315-436-2825 – Cell phone number

**LIVERPOOL MARCHING WARRIORS
PRESENT
"SILKS AND SOUNDS OF AUTUMN" 2019**

DATE: Saturday, October 5, 2019

TIME: 5:30 p.m.

LOCATION: Liverpool High School Stadium, Wetzel Road, Liverpool, NY

Contest Schedule:

5:25 p.m. Star Spangled Banner (played by flutist Amanda Richards)

5:28 p.m. Introduction of Judges

THE SCHEDULE BELOW INDICATES WARM UP TIME IN A MARKED FIELD REHEARSAL ARE FOR EACH BAND. IF YOU ARRIVE EARLIER, PLEASE FIND AN AREA TO REHEARSE BUT PLEASE ADHERE TO THE SCHEDULE AS PERFORMANCE TIMES APPROACH.

THANK YOU FOR YOUR CONSIDERATION AND COOPERATION

BAND	AREA	WARM UP TIME	STAGING AT GATE	PERFORMANCE TIME
Indian River	C	4:42 – 5:07	5:17	5:30
Norwich	B	4:55 – 5:20	5:30	5:43
Jordan Elbridge	A	5:08 – 5:33	5:43	5:56
Union Endicott	C	5:21 – 5:46	5:56	6:09
Westmoreland	B	5:34 – 5:59	6:09	6:22
INTERMISSION				6:35
Central Square	A	6:00 – 6:25	6:35	6:48
Mohonasen	C	6:13 – 6:38	6:48	7:01
East Syracuse Minoa	B	6:26 – 6:51	7:01	7:14
Oswego	A	6:39 – 7:04	7:14	7:27
Baldwinsville	C	6:52 – 7:17	7:27	7:40
West Genesee	B	7:05 – 7:30	7:40	7:53
Liverpool	A	7:18 – 7:43	7:53	8:06
Syracuse University	C	7:31 – 7:56	8:06	8:19

SEE MAP FOR WARM-UP AREA, STAGING, AND PERFORMANCE ENTRANCE AND EXITS

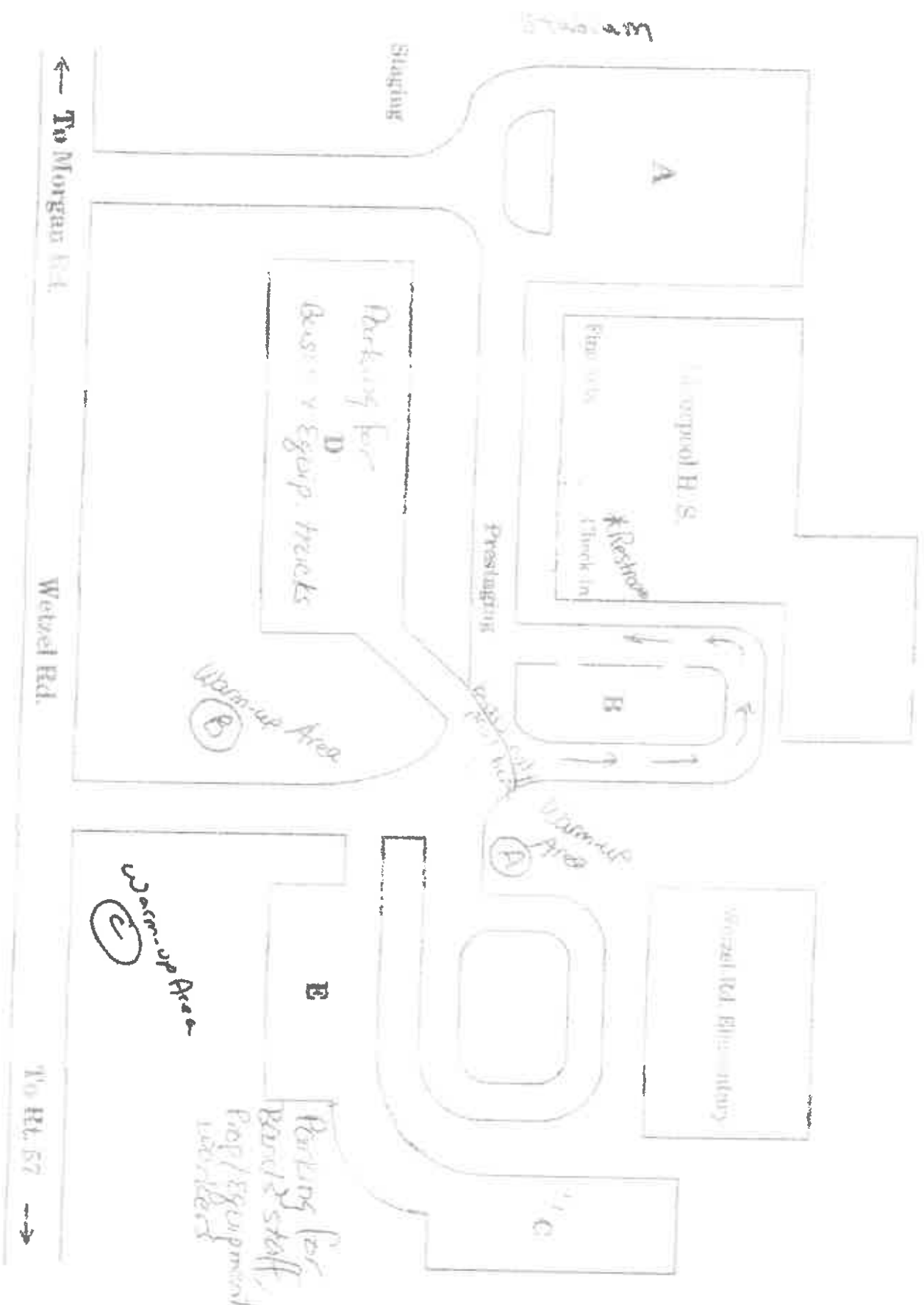
**FIELD ENTRANCE IS ON PERFORMERS' RIGHT (BY LONG JUMP PITS)
EXIT IS ON PERFORMERS' LEFT (BY TENNIS COURTS)**

8:40 50/50 PULLED AND DELIVERED TO ANNOUNCER TO READ NUMBER

8:45 SENIOR RECOGNITION

8:55 Drum majors report for retreat at scoreboard field gate

9:05 Presentation of Awards, Drum Major Retreat



CRITIQUE ORDER
TRAVELING DISTANCE

MOHONASEN – 116

INDIAN RIVER – 86

UNION ENDICOTT – 72

NORWICH – 54

WESTMORELAND – 41

OSWEGO – 27

JORDAN ELBRIDGE – 18

CENTRAL SQUARE – 11

EAST SYRACUSE MINOA – 9.6

BALDWINSVILLE – 6.8

WEST GENESEE – 6.8

LIVERPOOL - 0